



T7701ex is Fully Automatic Controller for Textile Dyeing and Washing Machines. With its flexible software infrastructure, it is compatible with all discontinuous machines regardless of brand and model.



Thanks to the Integrated Web Server, it provides ease of use and management for both the operator and technical maintenance team with features such as remote control, machine maintenance management, wireless monitoring.

It incorporates the latest software technologies with its LINUX operating system.

It provides a completely user-friendly interface with its 10.4" color touchscreen and keypad.

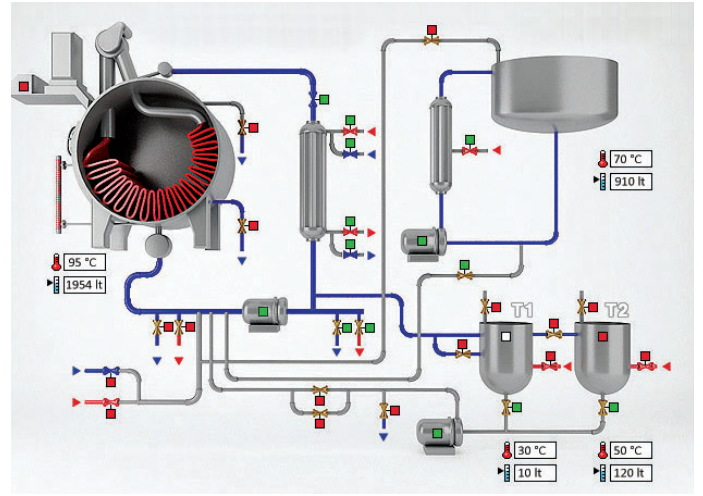
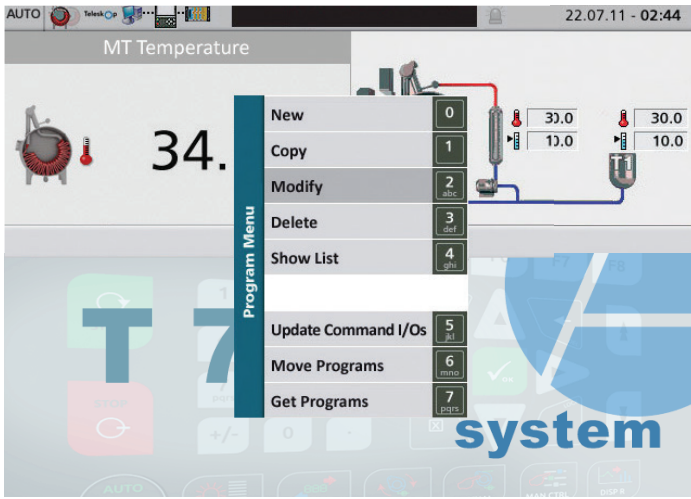
With USB and Ethernet connections, it provides easy access to projects and programs, software updates and remote technical support.

It provides a more detailed monitoring opportunity with animated mimic diagrams.

It ensures all process data to be recorded centrally by its continuous communication with TELESKOP Supervisory Management Systems.

BATCH CONTROLLER

For discontinuous fabric, yarn dyeing and garment dyeing, washing machines

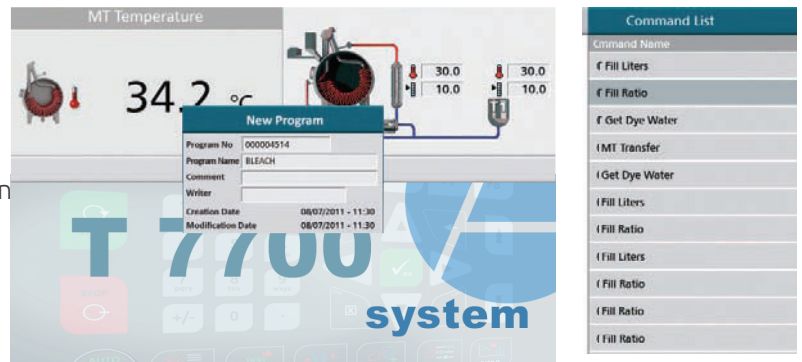


Easy to Use and Monitor

- Colorful graphical interface and interactively machine monitoring
- Touch screen
- Ability for user to change the information displayed on the screen
- Moving machine mimic diagrams
- Real-time temperature and level curves
- Real-time "tours - tour time" chart
- Managing machine equipment maintenance periods
- Manual interventions and their causes
- Idleness and its reasons
- Alarm management and alerts
- Manual intervention possibility
- Remote desktop connection
- Working as field data collection unit
- Password protection

Multi Language

Supporting languages such as Turkish, English, Chinese, Arabic, Persian, Portuguese, Russian, Vietnamese, Korean



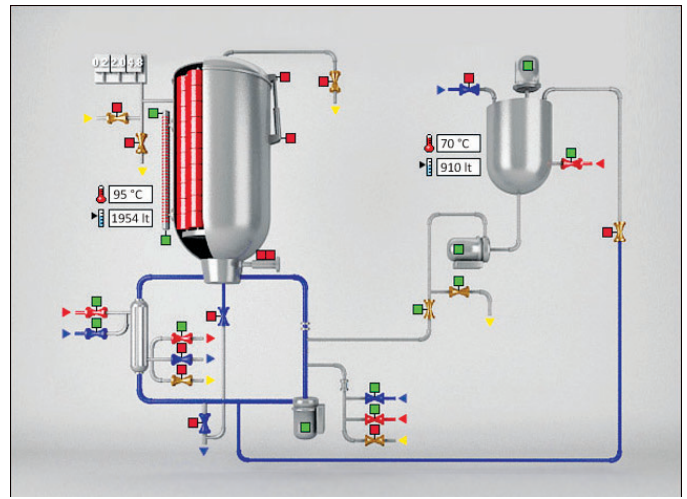
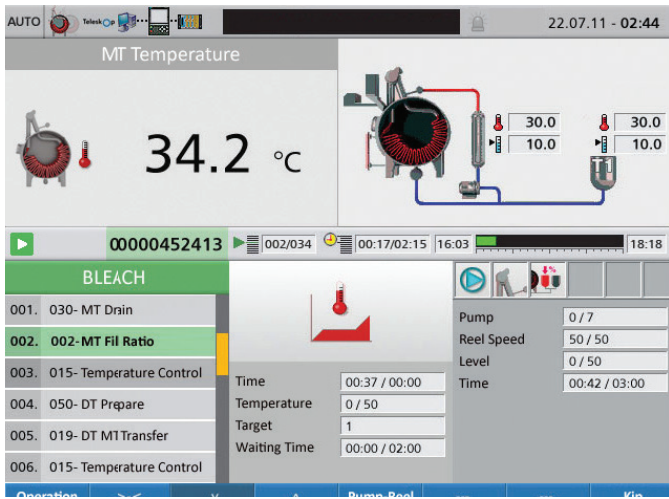
Storage, Backup and Maintenance

- Water, electricity consumption reports
- Theoretical steam consumption
- Backup of USB flash disk usage, configuration and process data
- Remote software version update with internet access

Utility Applications

Project Configuration Management Software, configuration backup, report tool, version update tool





IEC-61131 Standard

It contains the **IEC-61131** standard for function writing in the universal standard.

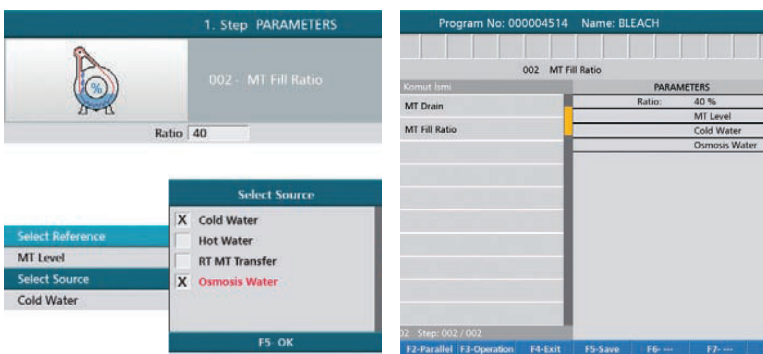
It provides 100% flexibility and security especially for machine manufacturers.

HTML5 Based Integrated Internet Server

Access via mobile devices and internet with applications such as maintenance, monitoring, testing, software update, dashboard.

Improvement and Acceleration Features

- Flexible and optimized programmes with formulabased target value calculations
- Automatic calculation of command parameters with "Batch start parameters"
- Ability to execute 15 parallel commands in one step
- Ability to define machine and timer constants
- Ability to work acoupled up to 6 machines with tour time calculation
- Automatic fabric speed calculation and tours control
- Starting pre-planned and ready-made processes loaded into the controller



Teleskop® Supervisory Control Software

Ready-to-run dyeing processes that can be loaded from Teleskop
Fully automatic workflow of chemical and dyestuff requests sent to the dispensers

User Management

Multi-user operation with authorization status
Multi-level password security

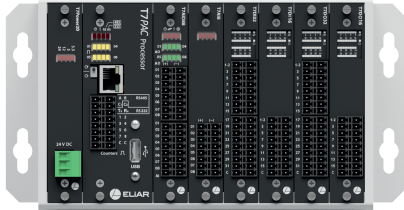


Input Output Configurations

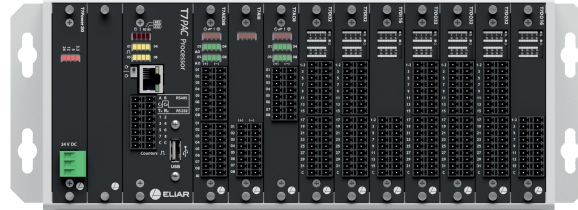
I/O Unit	Digital Input	Digital Output	Analog Input	Analog Output	Counter
T7PAC-6	64	64	16	16	8
T7PAC-10	96	128	24	24	8

T7PAC

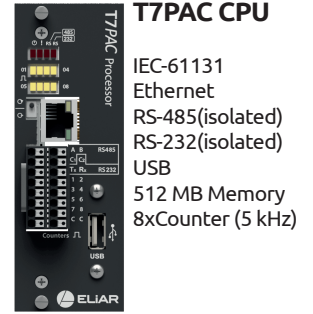
Rack Type, IEC-61131 Standard Programmable Automation Control System



T7PAC-6

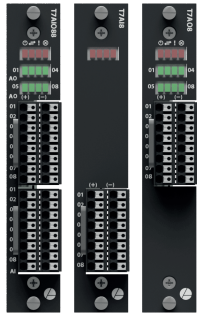


T7PAC-10



T7PAC CPU

IEC-61131
Ethernet
RS-485(isolated)
RS-232(isolated)
USB
512 MB Memory
8xCounter (5 kHz)



ANALOG INPUT / OUTPUT

T7AI088
* 8xAI (0/4-20 mA, 0-10 V,
Pt100 (first 4 channel))
* 8xAO (0/4-20 mA, 0-10 V)

T7AI8
*(8xAI) (0/4-20 mA, 0-10 V,
Pt100(first 4 channel))

T7AO8
*(8xAO) (0/4-20 mA, 0-10 V)



DIGITAL INPUT

T7DI32
* 32xDI (24VDC)

T7DI16
* 16xDI (24VDC)



DIGITAL OUTPUT

T7DO32
* 32xDO (24V, 1A max.)

T7DO16
* 16xDO (24V, 1A max.)

Technical Specifications

CPU	Intel® Atom™ based
Screen	10.4" TFT, 800x600 dpi, 64 K Color Touchscreen
Keypad	41 button, Industrial
Working Voltage	24 V DC (18-36 V)
Power Consumption	25 W OpTerm, 30 W T7PAC
Working Temperature	0-50°C
Humidity	% 10-85 (non-condensed)
Isolation	2000 V (digital), 500 V (analog)
Operating System	LINUX
Power Outage Protection	Li-ion battery, Automatic switch-off

I/O Unit	T7PAC Series
Connection	USB 2.0 & 3.0, 10/100 Mb Ethernet,
Memory	RAM: 2 GB Flash Memory: 32 GB
Protection Rating	IP 64 (front), IP 21 (back)
EMC Compatibility	EN 61000 - 4 - 2 EN 61000 - 4 - 4 EN 61000 - 4 - 6 EN 6100 - 4 - 11
Dimensions	274x349 (front), 170x242 (back) 100 (depth)
I/O Configuration	Max. 10 socket

Elia Elektronik San. A.S.

Esentepe Mahallesi Saglam Fikir Sokak No:1

Postcode: 34394 Sisli / Istanbul / Turkey

+90 212 274 30 31

+90 212 274 20 30

info@eliar.com.tr

www.eliar.com



Follow Us

eliarelektrolik

eliarelektroliktv1984